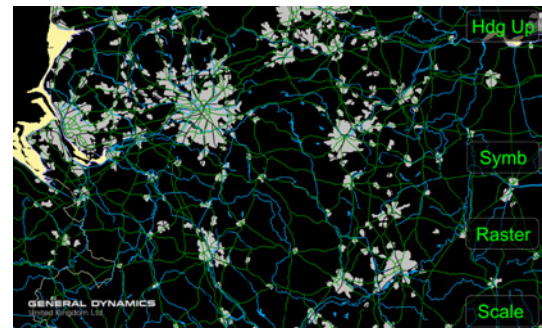


Whether in the air, on the ground or at sea, SoftMap™ provides full digital map and enhanced situational awareness visualisation

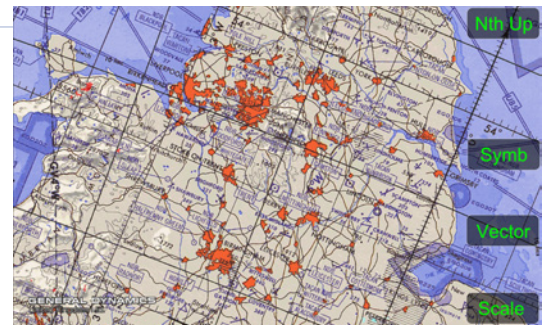
Any application that requires digital map and situational awareness visualisation can use SoftMap™ as its core. SoftMap™ is a platform-independent software solution offering rapid, intelligent, coherent and precise multi-layered digital map, navigation and terrain displays through to full tactical situation awareness.

Platform independence guards against obsolescence

SoftMap™ has been developed using open systems standards. It makes extensive use of the platform independent OpenGL graphics API and requires minimal operating system support to operate. As a result, SoftMap™ can be hosted on a wide range of platforms from embedded environments through to personal computers.



2D visualisation – vector



2D visualisation – raster



3D visualisation

A fully featured digital map solution

- Enhanced digital map
- Wide commercial and military vector, raster and matrix digital map format support for situational awareness in the air, on the ground or at sea (including US and UK formats)
- Multiple mixed and merged vector, raster and matrix-based layers
- Terrain awareness
- Navigational layers
- Mission support
- Tactical awareness
- Threat and line-of-sight processing
- 3D visualisation
- Digital information and imagery display
- Smooth moving or fixed position, slew-able display
- North up or rotated
- Rapid HMI development tool compatibility.

SoftMap™ support and integrated solutions

General Dynamics Mission Systems can provide a range of support services for developing and deploying SoftMap™-based systems to assist rapid and low-risk integration. Where the standard SoftMap™ product does not exactly match customer requirements, we can provide services to tailor SoftMap™ to meet those specific needs. We can also offer a range of SoftMap™-based integrated solutions from embedded single card to completely integrated turnkey systems.

Certification

The standard SoftMap™ product has been developed to RTCA/DO-178B DAL-D. Where a higher level of certification of design assurance is required, the SoftMap™ 178 product is available, which is developed to meet RTCA/DO-178C DAL-B.

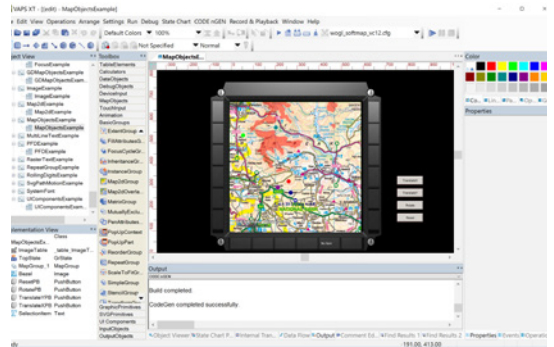
SoftMap™ Studio

SoftMap™ Studio is a Microsoft Windows application that gives the user full control over digital map formats and prepares the SoftMap™ map database used in the embedded environment.

SoftMap™ Studio is the key to offering a range of SoftMap™ functionality according to different needs and budgets. It is also the key to offering support for new map data formats without the need to modify SoftMap™ based systems already in the field.



Geo-referenced overlays

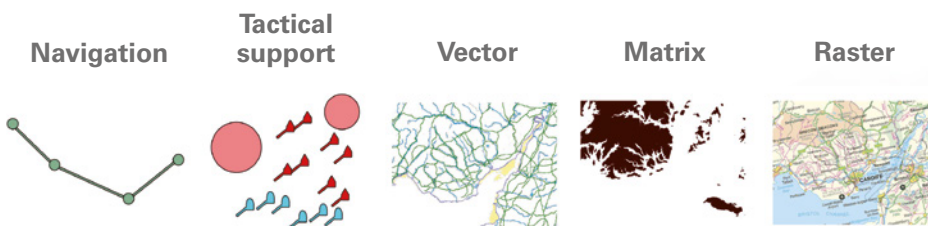


HMI developed tool compatibility



SoftMap™ Studio – map database preparation

SoftMap™ provides multi-layered situational awareness



To find out how SoftMap™ can solve your situational awareness requirements contact the SoftMap™ Solutions team at General Dynamics Mission Systems by email at: softmapsales@gd-ms.uk.

SoftMap™ is a registered trademark of General Dynamics United Kingdom Limited

Castleham Road
 St Leonards-on-Sea, East Sussex TN38 9NJ
 Tel: +44 (0)1424 853481
 Email: enquiries@gd-ms.uk
www.gd-ms.uk

© September 2019 General Dynamics United Kingdom Limited

The information contained in this publication is supplied by General Dynamics UK Limited (GDUK). It does not form part of any contract for the purchase of any product or service described in this publication. Although GDUK makes every effort to verify the accuracy of the information contained in this publication, the Company accepts no responsibility for any defect or error in this publication, or in the information supplied; nor shall GDUK be liable for any change or loss caused as a result of reliance upon such information.