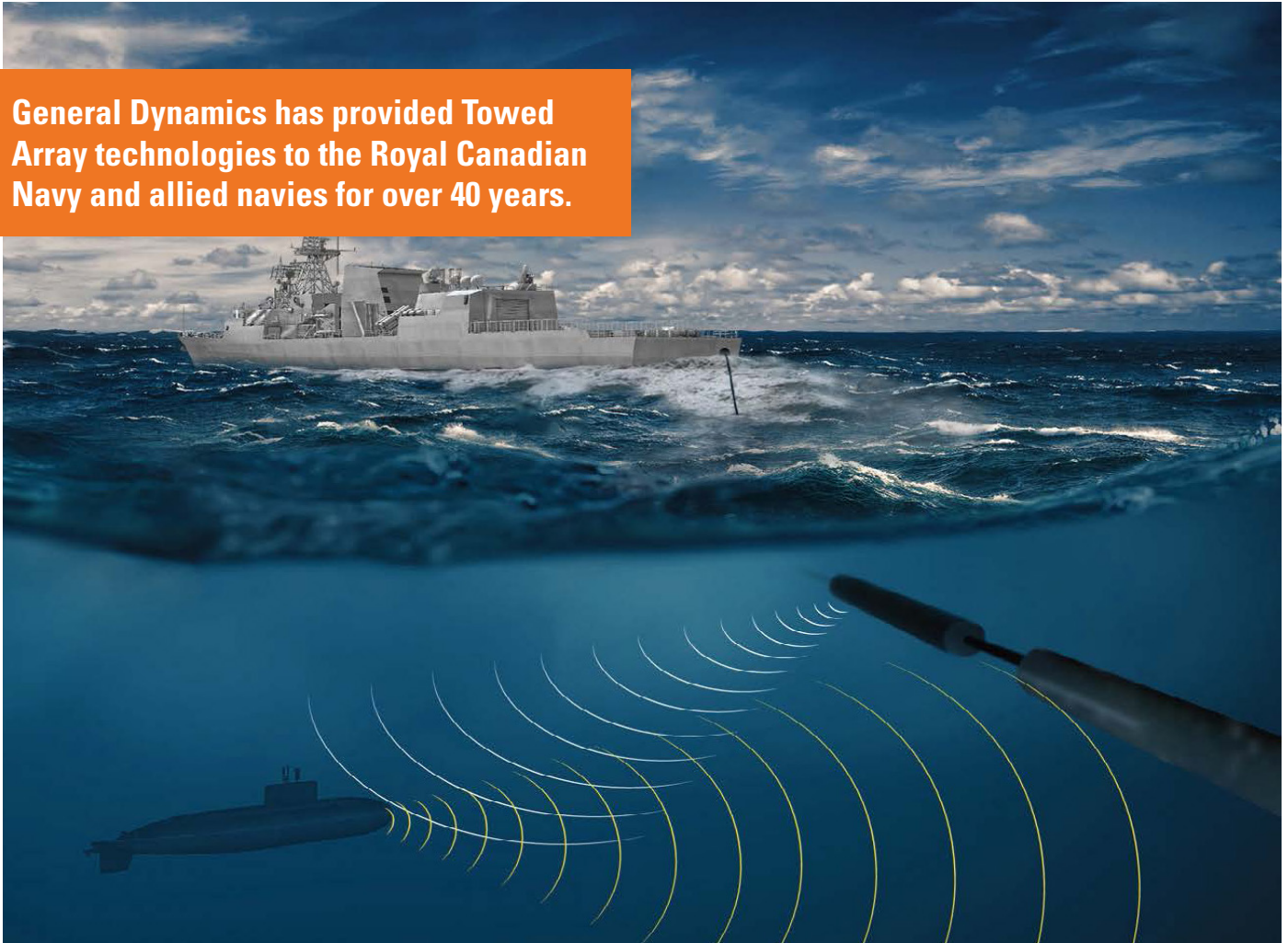


Towed Low Frequency Active / Passive Sonar

General Dynamics has provided Towed Array technologies to the Royal Canadian Navy and allied navies for over 40 years.



Operational Features

- Modular Active / Passive Towed Array for use in both deep water and littoral environments
- Modern Technology allows both the active transmit and passive receive electronics to be housed inside the same towed hose arrangement
- Able to transmit in Omnidirectional, Sector or Beam Modes
- Requires less space, weight, power for ship fitment as all wet end components are housed on a single winch drum
- Passive Receive Module offers broad frequency coverage and is ambiguity resolved
- Compact and lightweight array system that easily integrates with virtually any ship platform
- Horizontal Projector Array (HPA) supports many pulse types (LFM, HFM, CW) to be selected
- Single Winch design results in less space, weight and power required for installation
- Horizontal Projector Array can be towed in shallower water at higher power and is not as influenced by cavitation as in a DTAS System
- Offers the ship greater control of helm and speed as compared to most Tow Body LFA Systems

A Towed Low Frequency Active / Passive Sonar that integrates the best Wet End Sensor and Dry End Processing components industry has to offer



OPV

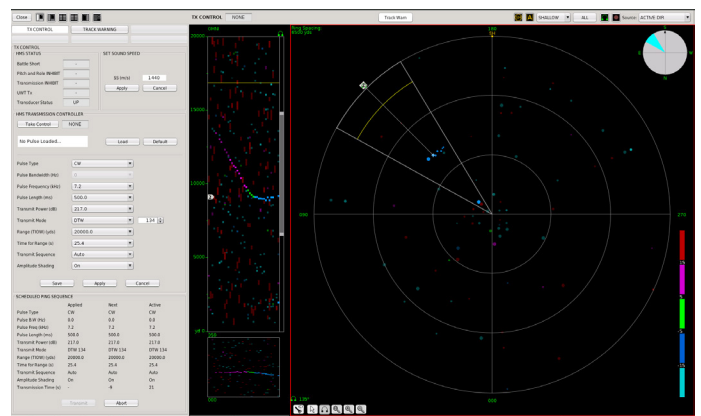
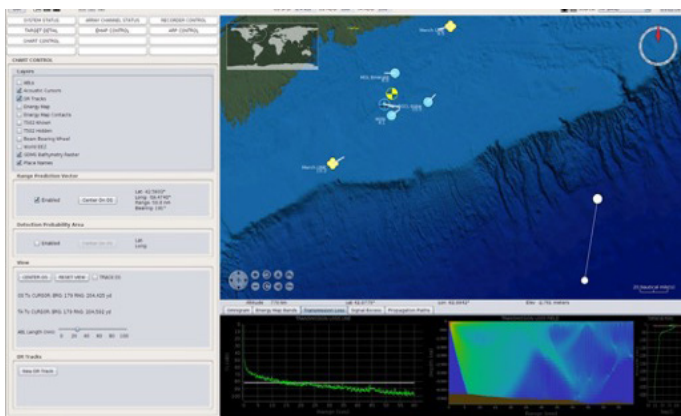
Corvette

Frigate

Destroyer

Technical Characteristics

Active source centre (Tx) frequency	1.9 kHz or 3.5 kHz (Interchangeable Modules)
Sound Pressure Level (Broadside Beam)	1.9 kHz – Medium / High, 3.5 kHz – High
Sound Pressure Level (Pseudo – Omni)	1.9 kHz – Medium, 3.5 kHz – Medium / High
Transmit pulse length	5ms, 50ms, 250ms, 1, 2, 5 and 10 Seconds
Transmit pulse type	FM, CW, HFM/CW, Custom
Transmit interval range	8 km, 16 km, 32 km, 64 km, 128 km, Slaved to target
Frequency Modulation Transmit Bandwidth	Wide FM Swept Band
Receive band (Rx) frequency coverage	0-4500 Hz
Active Projector Arrangement	Horizontal Projector Array
Passive Receive Arrangement	Four Aperture Nested Array Module



The product described here represents a general configuration of this family of products. Specifications are configurable for specific customer requirements. For pricing and availability information, please contact your General Dynamics representative.