

# Sonobuoy Acoustics Processor



General Dynamics has provided processing systems to the UK Royal Air Force, and the navies of Canada, Australia, Japan, and South Korea for over 40 years

***Best in Class Active and Passive Sonobuoy Processing System for Any Platform***

**Features:**

- Distributed sonobuoy acoustic processing
- Supports NATO Standard 99 sonobuoy RF Channel allocation
- Supports a broad range of passive and active sonobuoy manufacturer types
- Leverages commercial advances in hardware and latest innovations in signal processing technologies to maximize the detection of submerged threats
- Employs directional and spectral analysis to generate spatially aware spectral displays
- Full mission history data available for each of the concurrently processed sonobuoys

## Sonobuoy Processing System

Maximizes the detection of modern submerged threats

### OPERATIONAL CHARACTERISTICS

- Intuitive user interface tools that reduce operator workload in complex sonobuoy fields
- Full mission spectrum integration
- Low workload, high volume data management
- High fidelity processing of both active and passive buoys allows quick and easy threat localization
- Fast-time data replay and mission reconstruction and archiving
- Optimized for high target density, high clutter environments to achieve real-time multiple target tracking

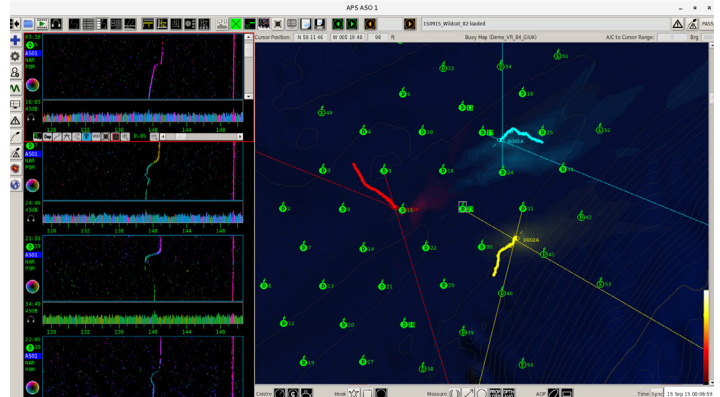
### MAIN CHARACTERISTICS

- Acoustics intelligence generation and exchange
- Wide range of supported sonobuoys that are easily exportable to allied nations
- Co-operative multistatic processing with both ship and helicopter sonars acting as transmitter or receiver in a multistatic field
- Embedded training mode can be used to dynamically generate realistic and complex acoustic scenarios to train acoustic operators
- Offers state-of-the-art, range independent, underwater acoustic predictions for both passive and active sonar
- Supports input of sensor, target and environmental parameters to produce range predictions



### UYS-506 PHYSICAL CHARACTERISTICS

Dimensions HxWxD	84mm x 231mm x 280mm (3.3" x 9.1" x 11.0")
Power Consumption	300W (Max)
Weight	<9kg (20lbs)



The product described here represents a general configuration of this family of products. Specifications are configurable for specific customer requirements. For pricing and availability information, please contact your General Dynamics representative.