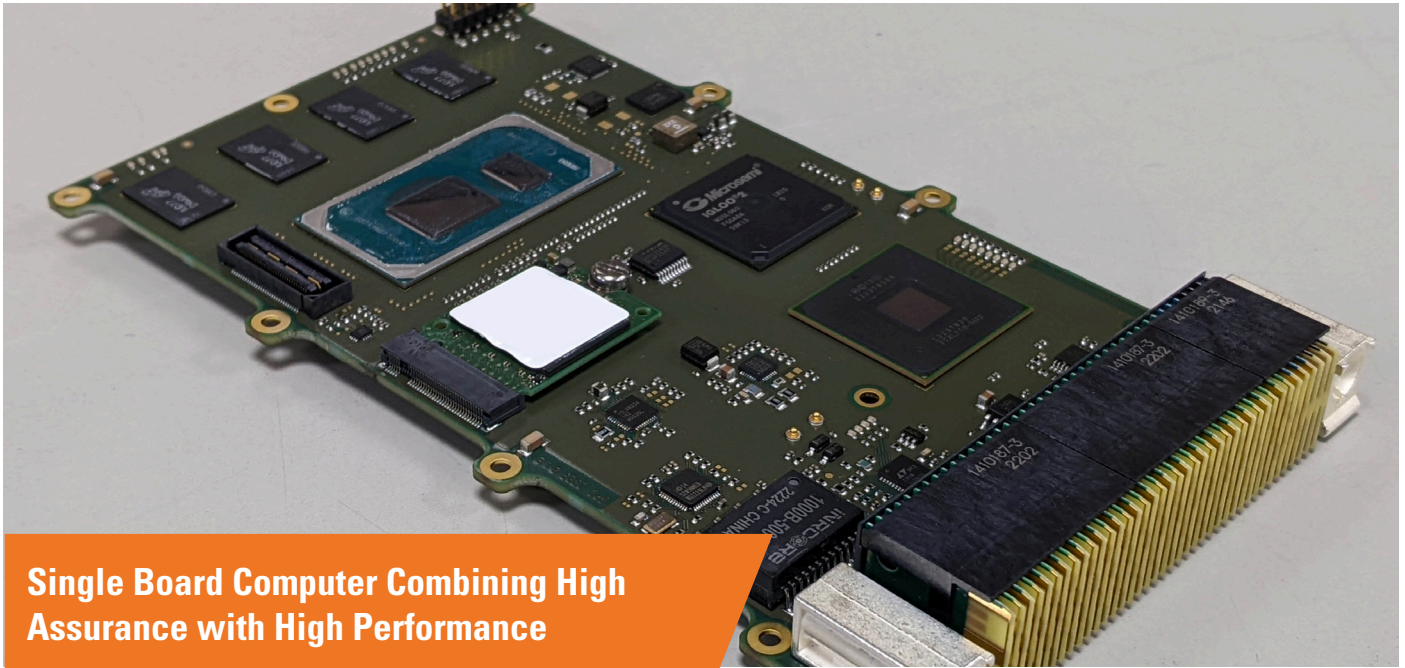


# Single Board Computer

## *High Performance Intel® Based Processing Board*



**Single Board Computer Combining High Assurance with High Performance**

*General Dynamics has developed the Single Board Computer (SBC) to provide a high performance 3U VPX module that can be used in systems that require high assurance levels. The processor can be used single-core or multi-core to provide improved performance and has built-in General Purpose Graphics Processing Unit (GPGPU) for high resolution display graphics and parallel compute.*

### **Processor Unit:**

- 11th Generation Intel® Tiger Lake i7-1186GRE Processor
  - » i7-1185GRE available as build option
- i7-1186GRE has automatic thermal throttling disabled
- 4-Core with hyperthreading (8 threads)
- Base frequency 1.8GHz (configurable) with Intel® Turbo Boost 2.0 allowing bursts of processor clock to 4.40GHz
- Integrated Platform Controller Hub (PCH)
- Integrated Intel® Iris® Xe graphics engine (1.35GHz) with up to 96 EUs
- OpenGL 4.6 support
- Open CL 2.0 support
- Vulkan 1.2 support
- Engineered in accordance with RTCA/DO-254

### **VPX Backplane:**

Single Slot 3U SOSA aligned to MOD3-PAY-1F1F2U1TU1T1U1T-16.2.15-2 / SLT3-PAY-1F1F2U1TU1T1U1T-14.2.16

### **Utility Plane:**

- 12V core supply
- 3V3 AUX system management supply
- VBAT RTC support
- IPMI

### **Utility Data Plane:**

- Supports a non-transparent bridge (NTB)
- PCIe Gen 3 x 4

# Technical Information

## Expansion Plane

PCIe Gen 3 x 4

## Control Plane

2 x 10G Ethernet (10GBase-KR)

1 x 1G Ethernet (1000Base-T)

## Maintenance Port

RS232

## Serial Ports

2 x RS232 or 1 x RS422 serial interface (or 1x RS485 as a build option)

2 x USB 2

## Volatile Memory

2 channel LPDDR4x 32GB (16GB per channel)

## Non-Volatile Memory

256GB NAND Flash SSD

2 x 32MB NOR Flash

## Video Output

1 x DP v1.2

Supports single display of 3840 x 2160 pixels @ 60 Hz

Supports dual display of 3840 x 2160 pixels @ 30Hz

## Other I/O

4 x GPIO as defined in VITA 65.0 (Section 5.15.1)

## Cooling

Air Flow Through based upon ANSI/VITA 48.8

Conduction in accordance with ANSI/VITA 46.0

Other options available

## Security

TPM 2.0

## Power

Min - 18W

Nominal - 24W -36W (dependant upon usage)

Peak - 72W (e.g. power up)

## Environmental

### Temperature & Altitude

RTCA/DO-160G, Section 4.5 (Category B4)  
Operating -40°C to +70°C Storage -55°C to 90°C

RTCA/DO-160G, Section 4.6.1 (Category F)

### Humidity

RTCA/DO-160G, Section 6.3  
Relative humidity of 95%

### Acceleration

RTCA/DO-160G, Section 7

### Vibration

RTCA/DO-160G, Section 8

### Abnormal Vibration

RTCA/DO 160G, Section 8.6

### Explosive Atmosphere

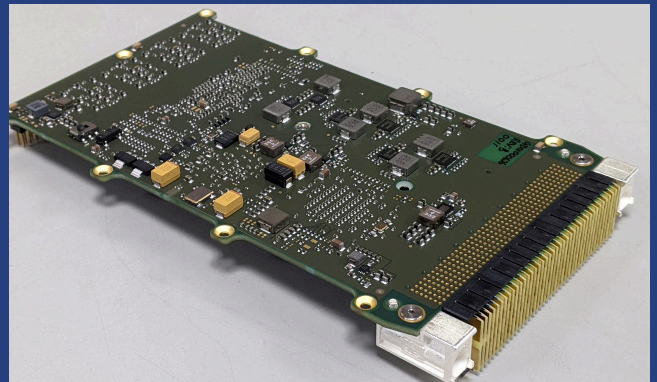
RTCA/DO-160G, Section 9

### Fungus Resistance

RTCA/DO-160G, Section 13

### EMC

Voltage spike conditions of RTCA/DO-160G, Section 17  
Radio frequency susceptibility conditions of RTCA/DO-160G, Section 20  
Radio frequency emissions do not exceed the levels defined in RTCA/DO-160G, Section 21



General Dynamics SBC design provides a highly capable module that can be used in high assurance applications.